

# Cyberjaya Updates

## First Quarter 2008

Prepared by: MSC Malaysia Cybercities  
Department

# Cyberjaya Updates

## Cyberjaya Flagship Zone Highlights

as of 1 March 2008

Number of MSC Malaysia Status Companies 30 MNCs , 386 SMEs	416
Completed Enterprise Space	3,030,600 sf.
Available Enterprise Space	133,881 sf.
Upcoming Enterprise Building by 1Q 2008 <ul style="list-style-type: none"><li>Prima 8</li><li>Cyberjaya Tech Zone (Embassy Group)</li></ul>	85,000 sf. 500,000 sf.
Day Population	35,020
Night Population	13,777
Completed Residential Units with CF	2,441

*Spearheading Transformation*

# Up and coming Projects in Cyberjaya

Project	Location	Description	Commence	Complete
Park and Ride at Lot PT12130	<ul style="list-style-type: none"> <li>▪ Intersection of Persiaran APEC and Persiaran Rimba</li> <li>▪ Opposite BOMBA Cyberjaya</li> </ul>	<ul style="list-style-type: none"> <li>▪ Construction of a Park &amp; Ride consisting of 453 car parking bays, 7 bus parking bays, 1 bus shelter and 1 guard house</li> </ul>	Q1 2008	Q3 2008
Data Centre at Lot PT12162 (Basis Bay)	<ul style="list-style-type: none"> <li>▪ Jalan Cyber Point 5</li> <li>▪ Opposite Balai Polis Cyberjaya</li> </ul>	<ul style="list-style-type: none"> <li>▪ Construction of a 5-storey Data Centre (Tier-3) with 2-storey Administration Block for a local data centre services company</li> </ul>	Q1 2008	Q3 2008
Satyam Global Delivery Campus at Lot PT12122	<ul style="list-style-type: none"> <li>▪ Persiaran APEC</li> <li>▪ Next to BOMBA Cyberjaya</li> </ul>	<ul style="list-style-type: none"> <li>▪ Construction of Global Delivery Campus for Satyam Computers Ltd. consisting 8-storey Main Block (IT office), Learning Centre, Auditorium and ancillary buildings</li> </ul>	Q1 2008	Q4 2008 (Partial) Q1 2009 (Full Completion)

# Up and coming Projects in Cyberjaya

Project	Location	Description	Commence	Complete
Affordable Housing at Lot P60, P61	<ul style="list-style-type: none"> <li>▪ Jalan Cyber Point 5.</li> <li>▪ South-West of DELL Global Business Center</li> </ul>	Construction of affordable and market rate housing units, and retail units.	Q1 2008	Q1 2009 (Phase 1)
Knowledge Workers Development Institute at Lot PT12152	<ul style="list-style-type: none"> <li>▪ Persiaran APEC</li> <li>▪ Opposite DELL Global Business Center</li> </ul>	Construction of K-Workers Development Institute, consisting of a Learning Centre, Enterprise Block and auditorium	Q2 2008	Q2 2009 (Phase 1)
HP Global IT Hub	<ul style="list-style-type: none"> <li>▪ West of Balai Polis Cyberjaya</li> <li>▪ South of Neo Cyber housing</li> </ul>	Construction of an Office block for HP	Q4 2008	Q2 2010

*Spearheading Transformation*

# Up and coming Projects in Cyberjaya

Project	Location	Description	Commence	Complete
CBD Perdana 2	<ul style="list-style-type: none"> <li>▪ Opposite Street Mall</li> <li>▪ Beside CBD Perdana 1</li> </ul>	<ul style="list-style-type: none"> <li>▪ Comprised of 256 strata parcels of signature retail and corporate office with total lettable space of about 530,000 sq ft.</li> </ul>	Q3 2008	2Q 2010
JPJ Data Centre	<ul style="list-style-type: none"> <li>▪ Opposite EDS</li> </ul>	<ul style="list-style-type: none"> <li>▪ Comprise of 100,000 sq ft office space</li> <li>▪ 10,000 sq ft Data Centre Space</li> </ul>	Q1 2008	Q4 2008
Bank Negara Data Centre	<ul style="list-style-type: none"> <li>▪ Opposite EDS</li> </ul>	<ul style="list-style-type: none"> <li>▪ 120,000 sq ft</li> </ul>	Q12008	Q4 2008

# Cyberjaya Updates

## Stakeholders in Cyberjaya Flagship Zone

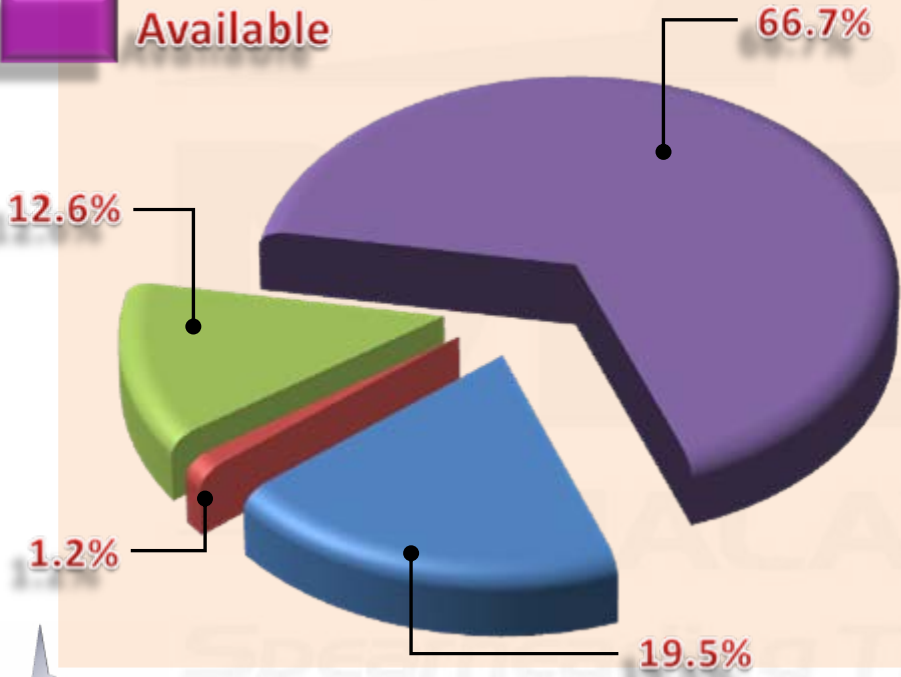
Multimedia Development Corporation (MDeC)	<ul style="list-style-type: none"><li>❑ Provide strategy and advice to Government on MSC BoG delivery</li><li>❑ Escalate to Government related issues and review of Cybercity status</li><li>❑ One-stop shop for MSC Malaysia Status Companies</li></ul>
Majlis Perbandaran Sepang (MPSp)	<ul style="list-style-type: none"><li>❑ Local authority</li><li>❑ Current Cybercity Management</li><li>❑ Co-chair of One-Stop Agency</li><li>❑ Owner and operator of City Command Centre</li><li>❑ Provider of municipal services</li></ul>
Cyberview Sdn. Bhd	<ul style="list-style-type: none"><li>❑ Landowner</li><li>❑ Conduit to deliver Government infrastructure, amenities and additional support facilities</li></ul>
Setia Haruman Sdn. Bhd. (SHSB)	<ul style="list-style-type: none"><li>❑ Master Developer appointed by Landowner</li><li>❑ Provider of basic infrastructure per CFZ Layout Plan</li></ul>



# Development Status

## Land

- Developed
- Under Construction
- Under Planning
- Available





# Development Plan 2010

City Wide Surveillance System

International School

Institutional Developments

Affordable Homes

Mixed Housing Development (4,000 units)

Park & Ride Facility

Commercial Developments

Digital Media Zone

KWDI

Affordable Homes (900 units)



Mosque

Medium to High- End Housing (2,000 units)



Enterprise Developments (3 mil sq.ft.)

Enterprise Developments (2 mil sq.ft.)

SME 2



Satyam GDC

Dell GBC



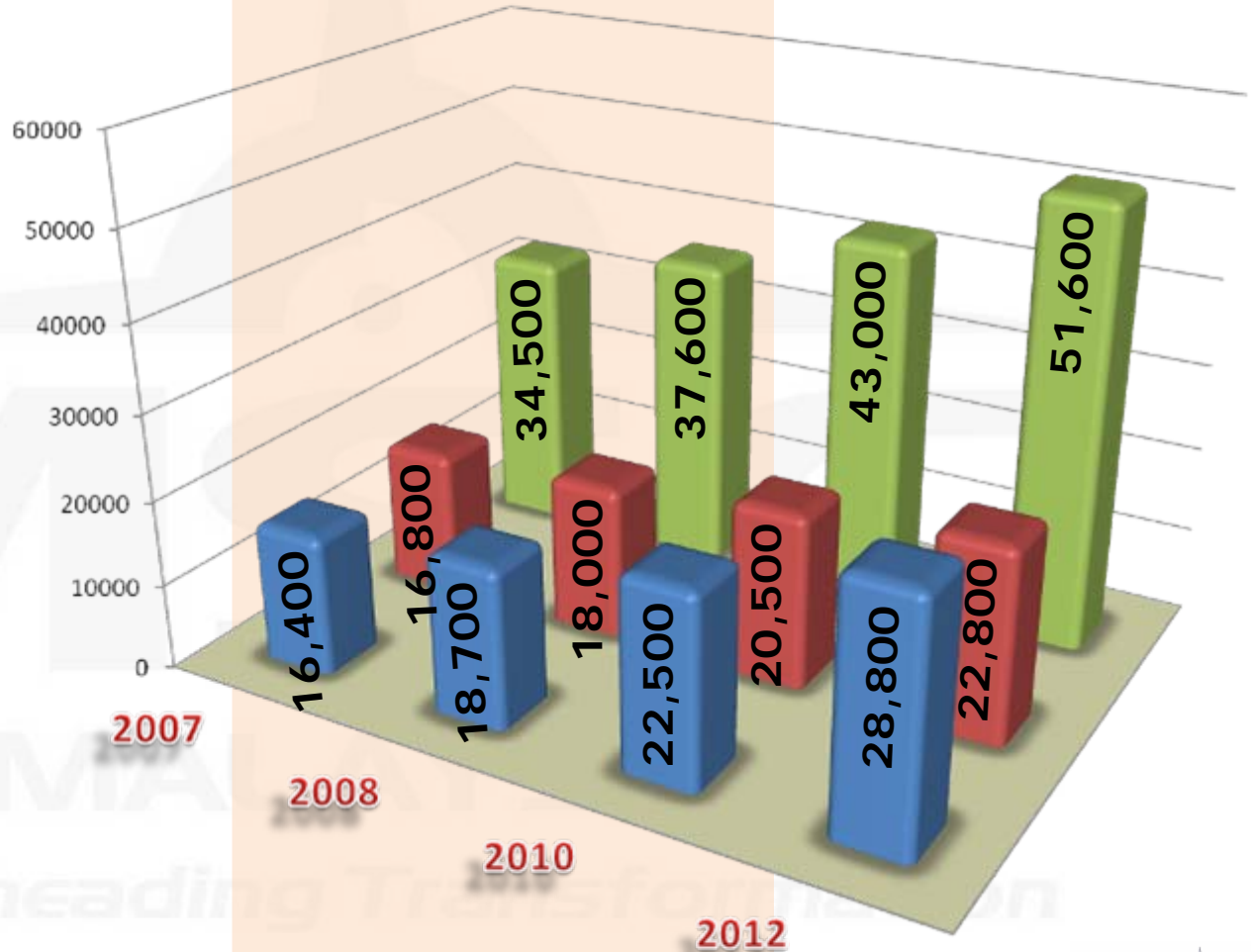
Park & Ride Facility



# Population

## Population Projection\*

- Students
- Workers
- Total



### Targeted Population\*\*

- Residents 180,000 ppl
- Workers 75,000 ppl

\*\* (Based on revised DLP)

\*Based on study by Henry Butcher Malaysia Sdn Bhd commissioned by Setia Haruman Sdn Bhd





# Residential Development Plan

- By 2010 the objective is to deliver over 3,500 residential homes.
- Delivered by sub-developers:
  - 2,000 units of medium to high end housing.
  - 900 units of affordable housing.
  - 600 units of mixed housing

# Neo Cyber @ Cyberjaya

## 21 Acre Development by EMKAY GROUP



**272 Residential Units**



**67 Shop Offices**





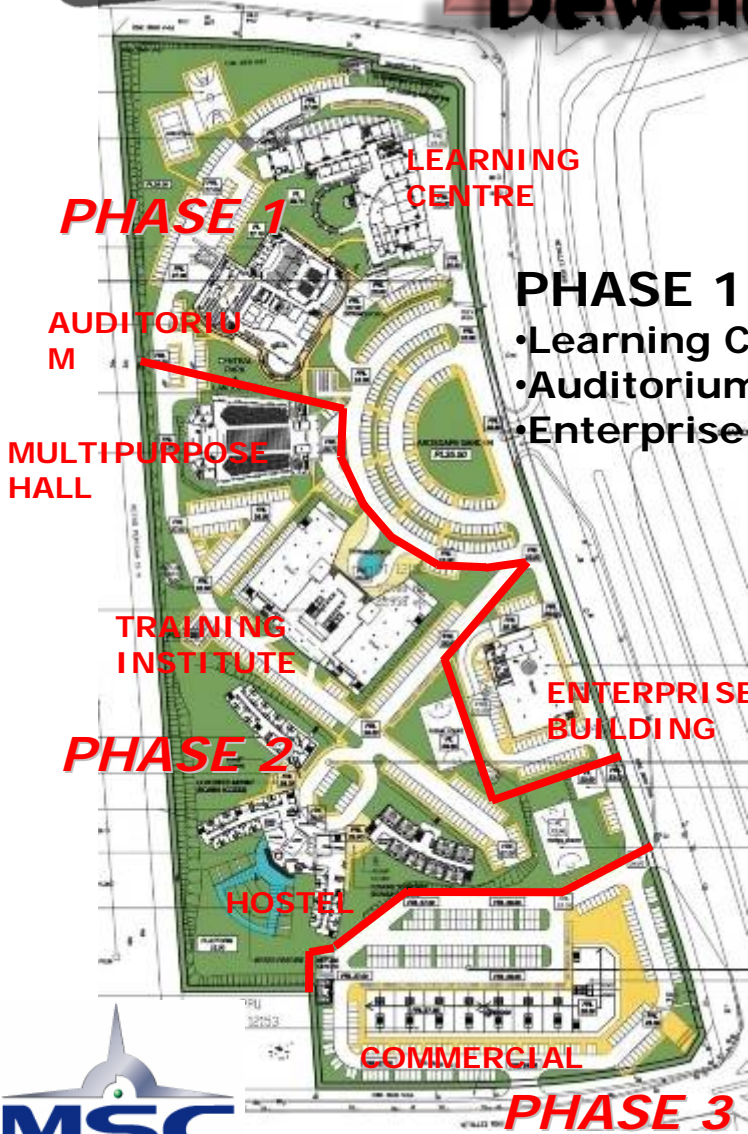
# Enterprise Space Development Plan

- Current office space is approximately 3.0 million ft<sup>2</sup>.
- Projected enterprise space is 5.0 million ft<sup>2</sup> by 2010.
- Currently under construction is 1.17 million ft<sup>2</sup>.

MALAYSIA  
Spearheading Transformation



# Knowledge Workers Development Institute



- PHASE 1:**
- Learning Centre
  - Auditorium
  - Enterprise Building

56,600 ft<sup>2</sup>  
 37,260 ft<sup>2</sup>  
 22,310 ft<sup>2</sup>



LEARNING CENTRE



AUDITORIUM



ENTERPRISE BUILDING





# Mixed Affordable Housing Development



## PHASE 1 – 579 units of houses:

- 2-Storey Terrace Type A 39 Units
- 2-Storey Terrace Type B 76 Units
- 4-Storey Walk-up Flats Type C 136 Units
- 4-Storey Courtyard Homes (D) 192 Units
- 4-Storey Walk-up Flats Type E 136 Units
- Shop lots 22 lots



# Satyam Global Delivery Campus



**MAIN BLOCK**

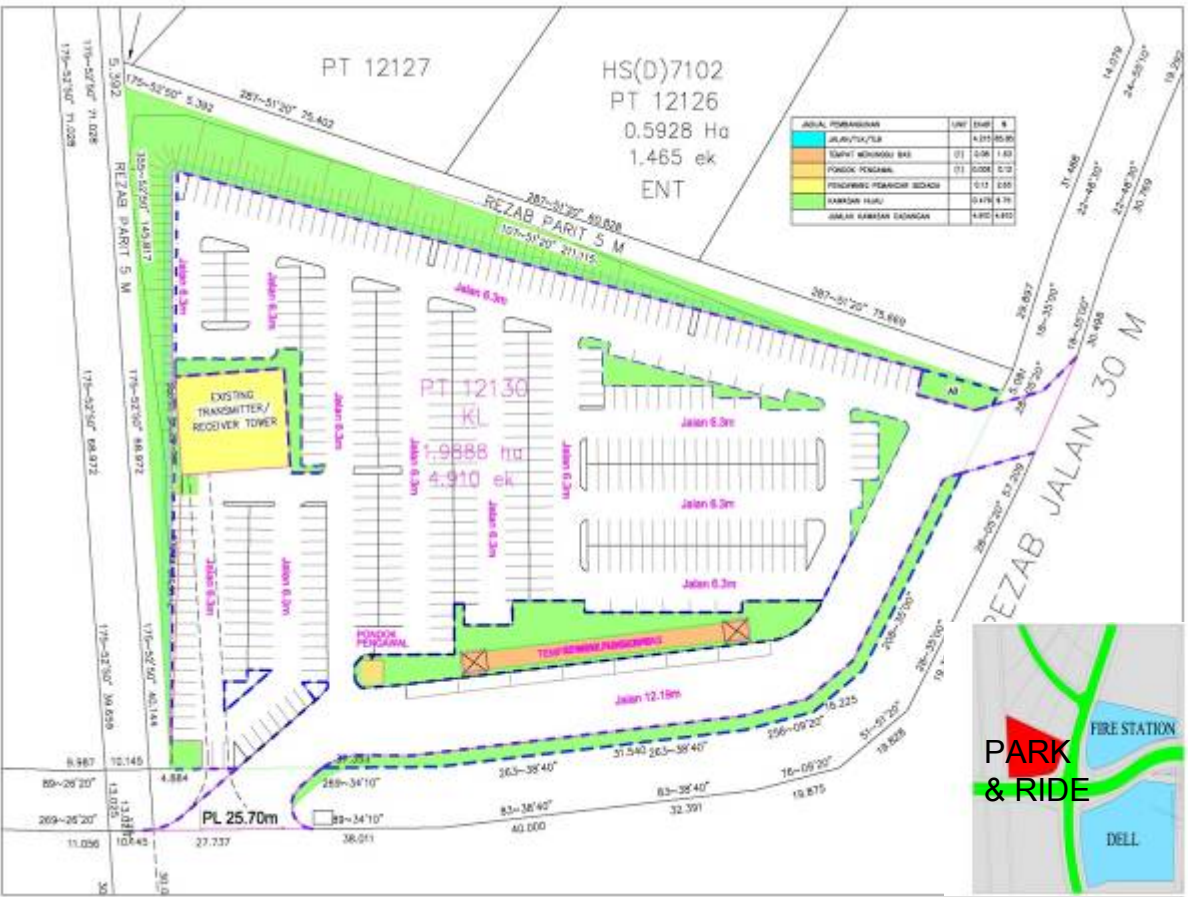
**PHASE 1 – 291,264 ft<sup>2</sup> :**

- Main Block 215,707 ft<sup>2</sup>
- Auditorium 11,216 ft<sup>2</sup>
- Learning Centre 38,107 ft<sup>2</sup>
- Cafeteria 20,960 ft<sup>2</sup>
- Utility 5,166 ft<sup>2</sup>
- Guard House 108 ft<sup>2</sup>





# Public Amenities - Park & Ride Facility



## Current Facilities:

- Sports Arena - 320 Car Parks

- Cyberpark - 260 Car Parks

## Proposed Additional Facilities:

- Park and Ride at Lot PT12130
- To build 423 Car Parks
- To build 7 Bus Bays

## Target Roll-Out:

- March 2008



**Layout Plan: Park And Ride Facility At PT12130**



# Public Amenities - CCTV Installation

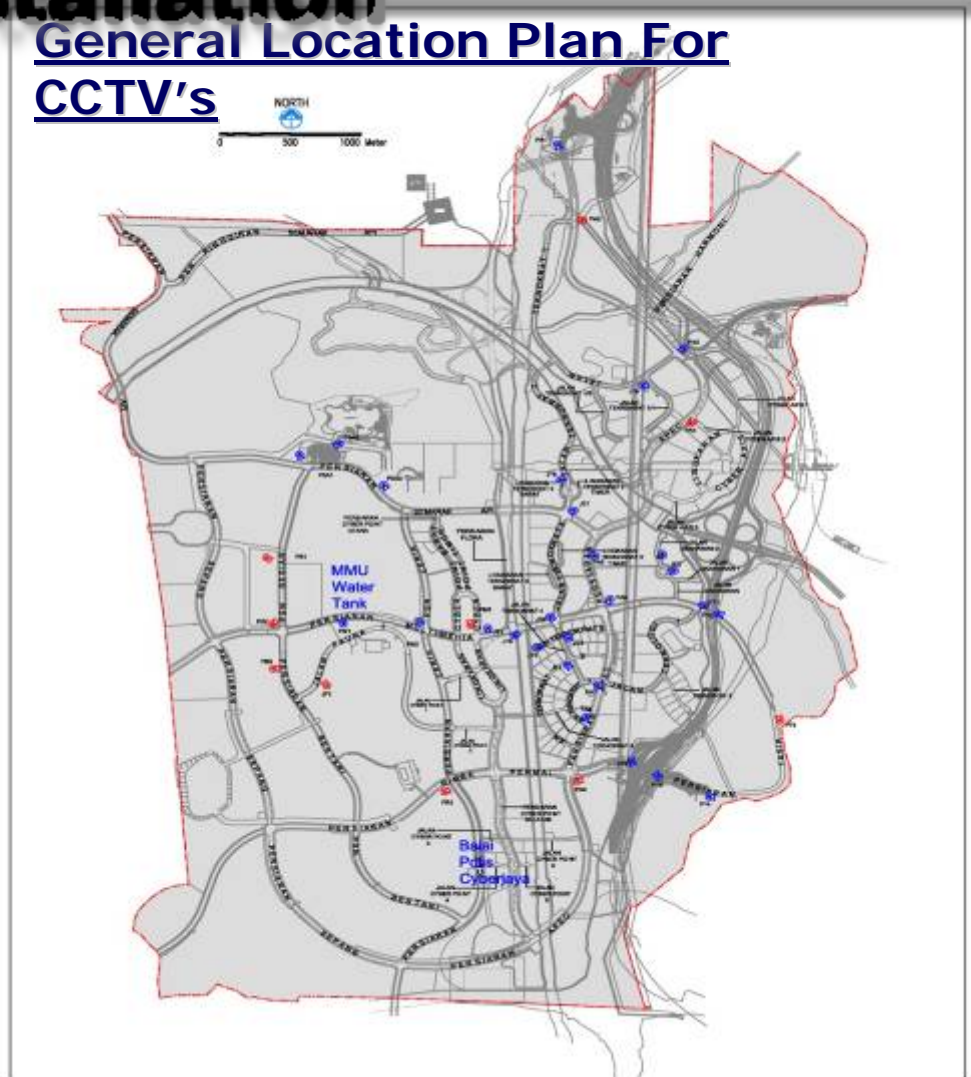
## General Location Plan For CCTV's

### Purpose :

To increase security for the township focusing on traffic, pedestrian walkways and general public areas around Cyberjaya Flagship Zone.

### Target Roll-Out :

First Quarter 2008



# Cyberjaya Updates

## Amenities : Cyberjaya Community Clubhouse



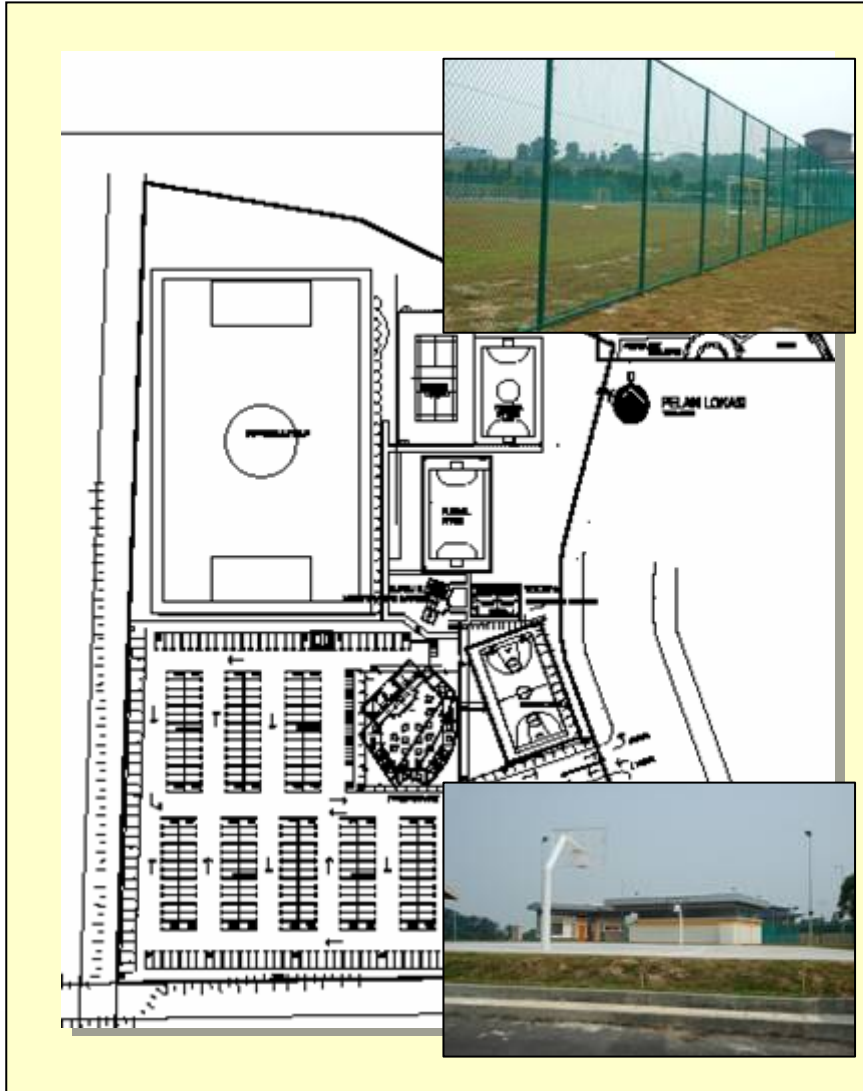
Located next to Taman Tasik Cyberjaya (Cyber Park)

### Facilities available:

- √ 3 badminton courts
- √ 2 futsal courts
- √ 2 squash courts
- √ Gymnasium
- √ Snooker, table tennis and game room
- √ Driving Range
- √ Swimming pool
- √ 2 tennis courts
- √ 1 basketball court
- √ Jogging track and playground
- √ Other clubhouse facilities include coffee house and function rooms

# Cyberjaya Updates

## Amenities: Sports Arena



- Sports Arena provided by Cyberview Sdn. Bhd. completed in September 2006
- Located next to Century Square
- Facilities available as follows:
  - 2 futsal courts
  - 1 tennis court
  - 1 basketball court
  - 1 football court
  - Food courts
  - All facilities now available for rental from RM5 per hour to Cyberjaya community

# Cyberjaya Updates

## Residential Development

CF Ready Units	
D' Melor Condo	120
Cyberview Garden	52
Cyberia Townhouse	472
Cyberia Apartment	1,399
Cyber Heights Villa	510
Serenity, Promenade	42
<b>Total</b>	<b>2,595</b>
Ready Bungalow Lots	
Promenade Lakeside	164
New Development	
The Domain@NeoCyber	272



**Domain@Neo Cyber**



**D'Promenade**

# Cyberjaya Updates

## Utilities

### Electricity



99.99% service availability (higher quality negotiable)

Triple source from Serdang, Air Hitam and Cyberjaya North

Uninterrupted supply via parallel feeder

24-hour, 365-day service centre

Performance Guarantee with Financial Penalty (PGFP) to direct MSC-status clients

### Water



Dedicated main supply from Sg. Semenyih, with alternate from Sg. Selangor

Cyberjaya Reservoir R1 with 48 hour backup supply

Water quality per WHO standard

Maximum 24 hour restoration time

PGFP in progress

### Infostructure



Minimum service availability for all services per month (99.9%)

Service Lead Time (Telephone, ISDN BRI/PRI, Domestic/International Free Phone, Domestic/International Leased Circuit, ATM circuit, Frame Relay, Internet Access Leased Circuit)

24-hour, 365-day service centre

PGFP to direct MSC Malaysia Status clients

### Chilled Water\*

MEGAJANA

#### Operation and maintenance

- Scheduled / Planned Supply Interruption
- Emergency Maintenance & Repairs
- Service Availability – Guaranteed at 99.9% per month

#### Services Restoration

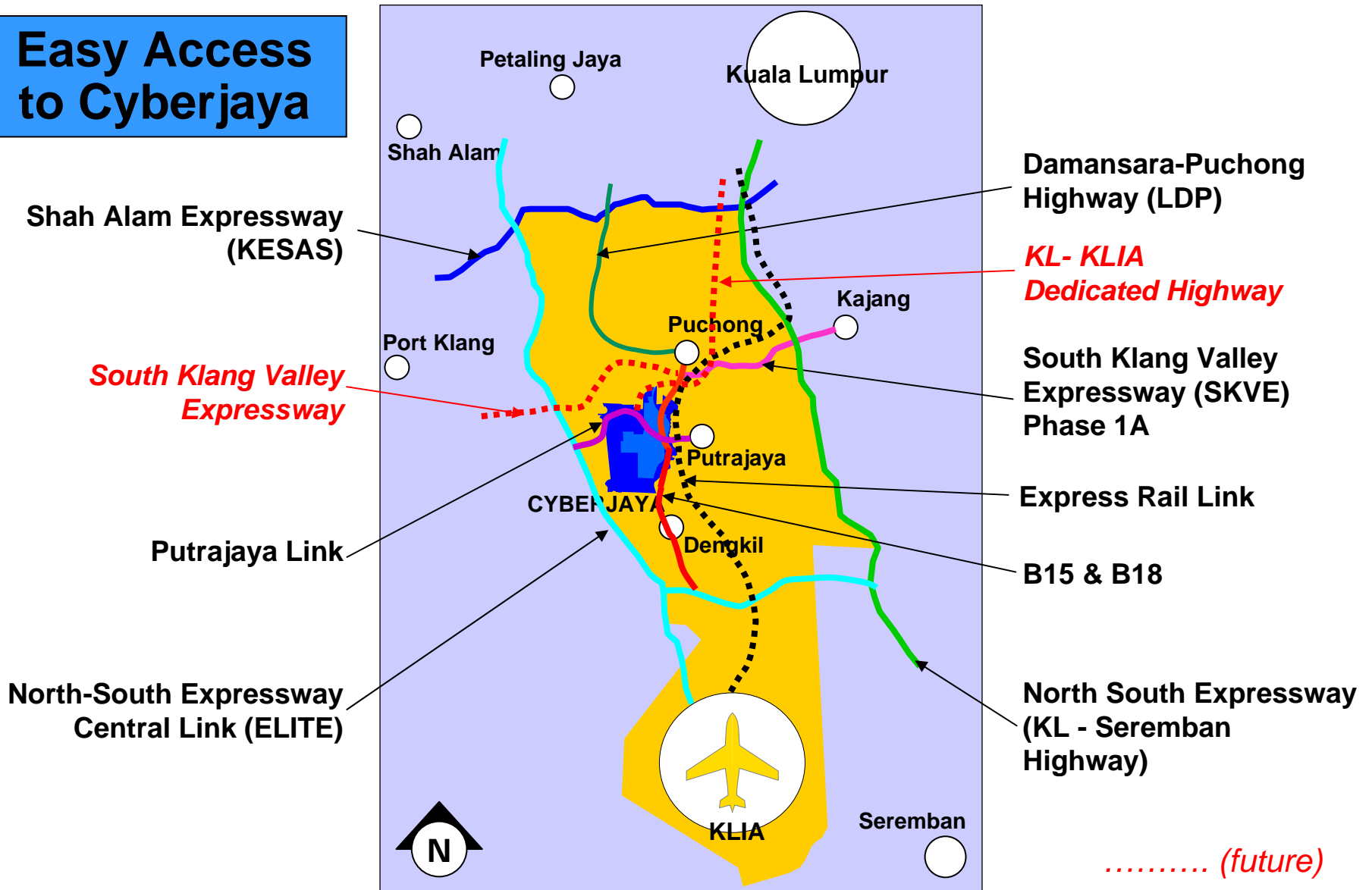
- Support Centre Availability
- Acknowledgement of Faults and Supply Problems
- Faults Supply Restoration
- Chilled Water Bills
- Bill Dispute

\* PGFP are offered to direct clients of Pendinginan Megajana having MSC Malaysia Status operating within Cyberjaya.

# Cyberjaya Updates

## Transportation

### Easy Access to Cyberjaya



Mode		Frequency	Hours	Remarks
ERL	KLIA Transit	30 mins	0550-0105	<ul style="list-style-type: none"> <li><input type="checkbox"/> Most reliable and efficient mode to Cyberjaya</li> <li><input type="checkbox"/> Daily Fare WTT-KL Sentral RM15/=</li> </ul>
Bus	Rapid KL Feeder Bus	20-30 mins	0600-0100	<ul style="list-style-type: none"> <li><input type="checkbox"/> Feeder bus matching ERL arrival and departure schedule</li> <li><input type="checkbox"/> Daily Fare = RM1.00</li> <li><input type="checkbox"/> Serves Cyberjaya Internal Route</li> <li><input type="checkbox"/> Cyberjaya Transport Terminal – Western Transport Terminal</li> </ul>
	<ul style="list-style-type: none"> <li><input type="checkbox"/> Bus No.428</li> <li><input type="checkbox"/> Bus No.429</li> </ul>			
Stage Bus	<ul style="list-style-type: none"> <li><input type="checkbox"/> KL Sentral (E1)</li> <li><input type="checkbox"/> KTM Serdang (T42)</li> <li><input type="checkbox"/> Bandar Utama via Puchong (T43)</li> </ul>	20-30 mins	0600-0000	<ul style="list-style-type: none"> <li><input type="checkbox"/> Travel time approximately 60 minutes <input type="checkbox"/> (Daily Fare RM4/=)</li> <li><input type="checkbox"/> Travel time approximately 30 minutes <input type="checkbox"/> (Daily Fare RM2/=)</li> <li><input type="checkbox"/> Travel time approximately 90 minutes <input type="checkbox"/> (Daily Fare RM2/=)</li> </ul>
	(all via WTT)			
	Kajang	5 / day	0815-1715	<input type="checkbox"/> Not major route
	Banting	10 / day	0750-1840	
Taxi		On request	24x7	<input type="checkbox"/> Maximum 20 minutes waiting time



# Cyberjaya Updates

## Dedicated Transport System (DTS)

- ❑ 24 / 7 Dedicated Bus Services to major Klang Valley Transport hub
- ❑ Fully Operational in 1 September 2006, launched on 10 September 2007
- ❑ Minimal stops, Current take up rate of 2,200 staffs
- ❑ Caters MSC Malaysia Shared Services Outsourcing and other MSC Malaysia Status Companies
- ❑ Monthly Fare - RM213/=

Route	Origin	Via	Destination	Stops	Journey time (minutes)
701	KL Sentral	LRT Bukit Jalil, IOI Mall	Cyberjaya	3	70
702	LRT Gombak	Melawati, Ampang, Bandar Tasik Selatan, KTM Serdang	Cyberjaya	5	105
703	Bangi	Kajang, Putrajaya Sentral(WTT)	Cyberjaya	3	45
704	Kepong	1 Utama, LRT Kelana Jaya, Summit USJ	Cyberjaya	4	75
705	Klang Parade	Darul Ehsan Med Centre Shah Alam	Cyberjaya	2	70
706	Seremban	Nilai	Cyberjaya	2	75
707	Banting	Dengkil	Cyberjaya	2	50

# Cyberjaya Updates

## Express Rail Link (ERL)

Normal Fares:					
One Way Fares	KL Sentral	Bandar Tasik Selatan	Putrajaya Cyberjaya	Salak Tinggi	KLIA
KL Sentral	€	4.20 / 2.00	9.50 / 4.50	12.50 / 6.00	35.00 / 15.00 / 20.00
Bandar Tasik Selatan	4.20 / 2.00	€	5.30 / 2.50	8.30 / 4.00	26.50 / 13.00 / 20.00
Putrajaya/Cyberjaya	9.50 / 4.50	5.30 / 2.50	€	3.00 / 1.50	6.20 / 3.00
Salak Tinggi	12.50 / 6.00	8.30 / 4.00	3.00 / 1.50	€	3.20 / 1.60
KLIA	35.00 / 15.00	26.50 / 13.00	6.20 / 3.00	3.20 / 1.60	€

Reference: senior citizen / adult / child  
 \*Price in ringgit malaysia (RM)

Promotions Fares:			
Return Package	Sector	Fares (RM)	
		Adult	Child
Putrajaya Return Same day return	<ul style="list-style-type: none"> <li>KL Sentral - Putrajaya / Cyberjaya</li> <li>1st trip valid for 1 month upon purchase 2nd trip within same day after 1st trip</li> </ul>	15	7

### Salak Tinggi travel card (monthly)

KL Sentral	RM 225
Bandar Tasik Selatan	RM 200

### Putrajaya travel card

	Monthly	Weekly
KL Sentral	RM 225	RM 75
Bandar Tasik Selatan	RM 150	RM 60
Salak Tinggi	RM 90	RM 30
KLIA	RM 150	RM 60

\* Monthly card contains maximum 60 trips within 31 days/Weekly card for travel within 7 days (maximum 14 trips)



# Cyberjaya Updates

## Express Rail Link (ERL)

### KLIA Transit Schedule

KL Sentral - KLIA



Scheduled Times: From KL Sentral to KLIA																			
KL Sentral	5.33	6.03	6.33	7.03	7.33	8.03	8.33	9.03	9.33	10.03	10.33	11.03	11.33	12.03	12.33	13.03	13.33	14.03	14.33
Bandar Tasik Selatan	5.40	6.10	6.40	7.10	7.40	8.10	8.40	9.10	9.40	10.10	10.40	11.10	11.40	12.10	12.40	13.10	13.40	14.10	14.40
Cyberjaya / Putrajaya	5.50	6.20	6.50	7.20	7.50	8.20	8.50	9.20	9.50	10.20	10.50	11.20	11.50	12.20	12.50	13.20	13.50	14.20	14.50
Salak Tinggi	5.59	6.29	6.59	7.29	7.59	8.29	8.59	9.29	9.59	10.29	10.59	11.29	11.59	12.29	12.59	13.29	13.59	14.29	14.59
KLIA	6.08	6.38	7.08	7.38	8.08	8.38	9.08	9.38	10.08	10.38	11.08	11.38	12.08	12.38	13.08	13.38	14.08	14.38	15.08



Scheduled Times: From KL Sentral to KLIA																			
KL Sentral	15.03	15.33	16.03	16.33	17.03	17.33	18.03	18.33	19.03	19.33	20.03	20.33	21.03	21.33	22.03	22.33	23.03	23.33	0.03
Bandar Tasik Selatan	15.10	15.40	16.10	16.40	17.10	17.40	18.10	18.40	19.10	19.40	20.10	20.40	21.10	21.40	22.10	22.40	23.10	23.40	0.10
Cyberjaya / Putrajaya	15.20	15.50	16.20	16.50	17.20	17.50	18.20	18.50	19.20	19.50	20.20	20.50	21.20	21.50	22.20	22.50	23.20	23.50	0.20
Salak Tinggi	15.29	15.59	16.29	16.59	17.29	17.59	18.29	18.59	19.29	19.59	20.29	20.59	21.29	21.59	22.29	22.59	23.29	23.59	0.29
KLIA	15.38	16.08	16.38	17.08	17.38	18.08	18.38	19.08	19.38	20.08	20.38	21.08	21.38	22.08	22.38	23.08	23.38	0.08	0.38

KLIA - KL SENTRAL



Scheduled Times: From KLIA to KL Sentral																			
KLIA	5.52	6.22	6.52	7.22	7.52	8.22	8.52	9.22	9.52	10.22	10.52	11.22	11.52	12.22	12.52	13.22	13.52	14.22	14.52
Salak Tinggi	5.58	6.28	6.58	7.28	7.58	8.28	8.58	9.28	9.58	10.28	10.58	11.28	11.58	12.28	12.58	13.28	13.58	14.28	14.58
Cyberjaya / Putrajaya	6.05	6.35	7.05	7.35	8.05	8.35	9.05	9.35	10.05	10.35	11.05	11.35	12.05	12.35	13.05	13.35	14.05	14.35	15.05
Bandar Tasik Selatan	6.16	6.46	7.16	7.46	8.16	8.46	9.16	9.46	10.16	10.46	11.16	11.46	12.16	12.46	13.16	13.46	14.16	14.46	15.16
KL Sentral	6.27	6.57	7.27	7.57	8.27	8.57	9.27	9.57	10.27	10.57	11.27	11.57	12.27	12.57	13.27	13.57	14.27	14.57	15.27



Scheduled Times: From KLIA to KL Sentral																				
KLIA	15.22	15.52	16.22	16.52	17.22	17.52	18.22	18.52	19.22	19.52	20.22	20.52	21.22	21.52	22.22	22.52	23.22	23.52	0.22	0.52
Salak Tinggi	15.28	15.58	16.28	16.58	17.28	17.58	18.28	18.58	19.28	19.58	20.28	20.58	21.28	21.58	22.28	22.58	23.28	23.58	0.28	0.58
Cyberjaya / Putrajaya	15.35	16.05	16.35	17.05	17.35	18.05	18.35	19.05	19.35	20.05	20.35	21.05	21.35	22.05	22.35	23.05	23.35	0.05	0.35	1.05
Bandar Tasik Selatan	15.46	16.16	16.46	17.16	17.46	18.16	18.46	19.16	19.46	20.16	20.46	21.16	21.46	22.16	22.46	23.16	23.46	0.16	0.46	1.16
KL Sentral	15.57	16.27	16.57	17.27	17.57	18.27	18.57	19.27	19.57	20.27	20.57	21.27	21.57	22.27	22.57	23.27	23.57	0.27	0.57	1.27

Spearheading Transformation

# Cyberjaya Updates

## Public Transportation (cont.)

### Taxi Service

- Taxi service from Cyberjaya provided by Persatuan Kereta Sewa Sepang is available at Cyberjaya Transport Terminal.

- 24 hour Hotline no. : 03-8318 0700

- Taxi service from WTT ERL Station provided by Persatuan Pemandu Teksi Putrajaya.

- 24 hour Hotline no. : 012-377 5949

### Bus Service

- Rapid KL Bus Service

- 1800-388-228

- Dedicated Transport Service (DTS)

- 24 hour Hotline no. : 03-8318 5295 / 03-8318 5264



# Cyberjaya Updates

## Contacts

List of Contact Numbers	
❑ Cyberjaya Police	03-8318 2222
❑ Cyberjaya Bomba	03-8318 8944
❑ Hospital Putrajaya	03-8312 4200
❑ Hospital Serdang	03-8947 5555
❑ Majlis Perbandaran Sepang (MPSp)	03-8778 2000
❑ City Command Centre (CCC)	03-8686 6060
❑ JKR Sepang	03-8706 3310
❑ Syabas	1800-88-5252
❑ Tenaga Nasional Berhad	03-8886 6888
❑ Cyberview Sdn. Bhd.	03-8315 6111
❑ Setia Haruman Sdn. Bhd.	03-8312 8000